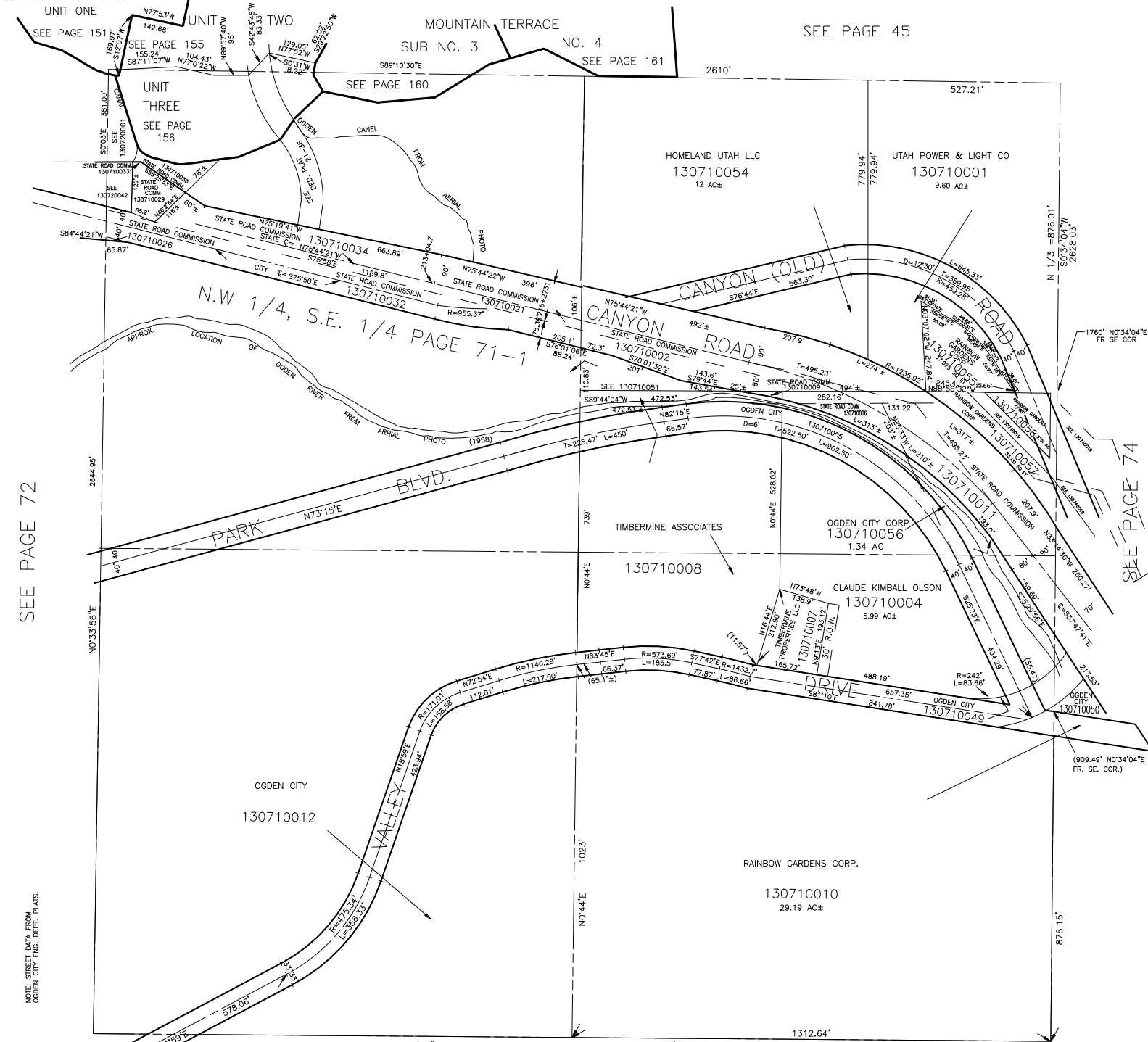


S.E. 1/4  
SECTION 22, T.6N.,R.1W., S.L.B. & M.

IN OGDEN CITY  
SCALE 1" = 200'

TAXING UNIT: 25

EL MONTE VISTA SUBD.  
UNIT ONE



SEE PAGE 72

SEE PAGE 74

NOTE: STREET DATA FROM  
OGDEN CITY ENG. DEPT., PLATS.  
CITY MONUMENT  
A=155+85.70  
B=186+47.06

SEE PAGE 80